

Term Times

Spring Term 2018

School closed for training
on Fri 16th February

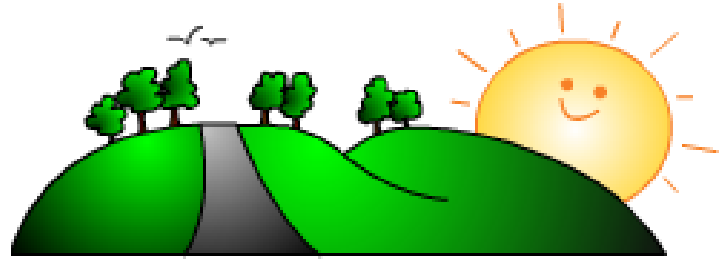
Half Term Break

Mon 19th Feb – Fri 23rd Feb

School Opens on Mon 26th Feb
School Closes on Thurs 29th March

Easter Break

Fri 30th March – Mon 16th April



Pride in all we do

Summer Term 2018

School Opens on Mon 16th April
Bank Holiday Mon 7th May
School closed for training
On Fri 25th May

Half Term Break

Mon 28th May – Fri 1st June

School Opens on Mon 4th June
School Closes on Fri 20th July

School re-opens to children on
Tuesday 4th September 2018

*Please note that the school is not used as a
Polling Station and therefore remains open as
usual on Voting Days*

*Holidays should not be taken
during term time. Parents can now be fined by
the Local Authority £60 per parent, per child
for unauthorised holidays.
If this fee is not paid within 21 days, it
rises to £120 per parent,
per child.*

*The national expectation for
school attendance is 95% which means
not more than 10 days out of
school each academic year*

**Eaton Valley
Primary School**

Newsletter

13th February 2018

*“The teaching of reading has
improved and pupils love the
interesting books that they read.”
Ofsted Nov 2017*



I am becoming increasingly concerned with the number of late arrivals to school and the number of late pick ups at the end of the school day.

A number of years ago the start of school day procedures were altered to give parents the earlier drop off time of 8:40am. This 'opening' time extends another 15mins, to 8:55am, and should give children ample time to arrive to school on time.

Arriving late to class is not only embarrassing for children but also means that they miss valuable learning time.

Please ensure your child arrives to school on time.

Late collections by parents at the end of the school day is also distressing for pupils who do not understand why their parent is not there for them.

The expectation is that all pupils are collected promptly at 3:15pm.

The local traffic conditions are understood by all. The motorway improvements to the M5 and the knock on effect this is having in the West Bromwich area, have been something that we are all having to cope with at the moment and, being delayed in heavy traffic, should no longer be unexpected!

Please plan to arrive at school in plenty of time to collect your child on time. Leaving 5 or 10 minutes earlier can make all the difference and reduce everyone's stress levels.

If, on a rare occasion, you are running late, please inform the school so we are able to explain the situation to your child.

Please ensure you arrive on time to collect your child at 3:15pm.

Mrs S Ramsay

A reminder that Breakfast Club and dinner money payments should be made in advance at the school office please.

Not paying on time causes the school difficulties with cash flow and wasted time 'chasing' payments.

Can parents also inform the school office promptly when a child changes from dinners to sandwiches and vice versa. Some schools do not allow this at all, however we try to accommodate parent and pupil wishes but please ensure we know about this in advance as it can cause problems for our kitchen staff.

Miss Woodhall will be leaving us at February half term after working for 12 years supporting children at both Cronehills and Eaton Valley.

She will be missed but has decided that now is the time to move on to different challenges.

I am sure you will join us all in wishing her well.



New Parent Forum

Would you like to join a 'Parent Forum'?

If you would value an opportunity to discuss issues and give a parents' point of view on what goes on in school—please join Mrs Ramsay on Wednesday 28th February at 2.00pm (biscuits provided!)

Dates for your diary

15th Feb	Y6 Parent Workshop
16th Feb	<u>Closed</u> to children for staff training
17-25 Feb	Half term
27th Feb	Y2 visit to Cadbury World
1st Mar	Reception 'Stay and Play' session
1st Mar	World Book Day
2nd Mar	Y2 Parent Workshop
6th Mar	Y5 visit to the Space Centre
8th Mar	Y6 to Black Country Museum
8/9th Mar	Eco bus in school for Y4
9th Mar	Y1 Mothers' Day Assembly
14th Mar	Y1 visit to Wonderland
15th Mar	Science day at Eaton Valley
23rd Mar	Sport Relief led by Y3
27th Mar	After school Easter disco